

# GALLERY NYMPHEAS

Ref. COM-GAL-NYM-01



Splendid artist piece with 3 doors

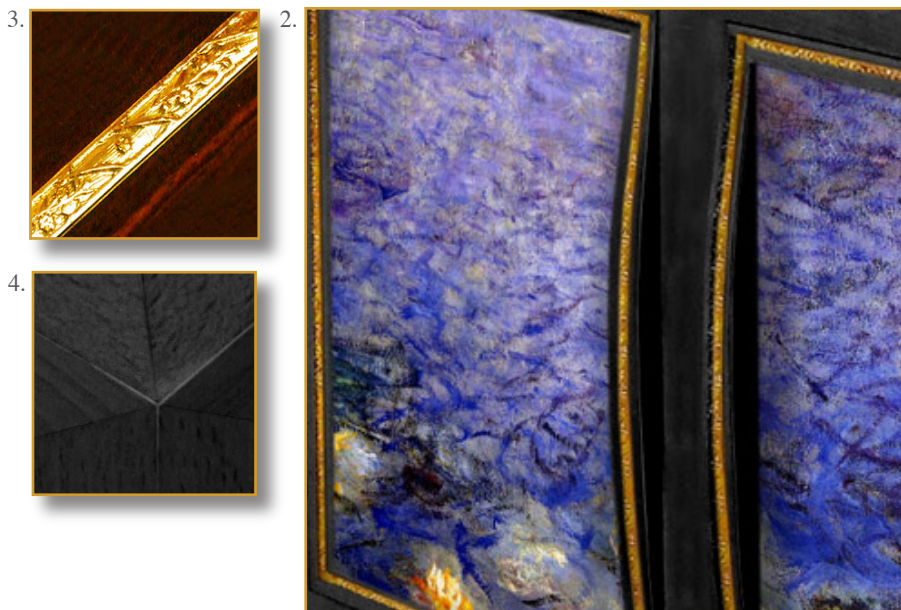
Decor: «Nymphéas» by Monet.  
Exclusive printed lambskin.

Essence: french wild cherry wood

Frames: chiseled brass floral  
pattern. Legs brass foil inlaid

No hardware can be seen (totally  
invisible magnetic lock system)

100 x 110 x 45 cm (h/l/p)  
39.4 x 43.3 x 17.7 in.



1. Decor: «Nymphéas» by Monet.  
Exclusive printed lambskin. Frames :  
chiseled brass floral pattern. Legs brass foil  
inlaid  
2. Doors detail. «Nymphéas» by Claude  
Monet, exclusive printed lambskin. Curved  
integrated handles. Chiseled brass floral  
pattern.  
3. Detail. Chiseled brass floral pattern.  
4. Detail. Triple miter cut imbricated. A  
cabinet maker performance.

Customization : Each piece may be realised in natural wood tint, or with the colour of leather or fabric you select.

We can also adapt it to dimensions that suit you.

There are also many other adjustments that could be envisaged (adding drawers, change of buttons, etc).

Don't hesitate to tell us what you would like.